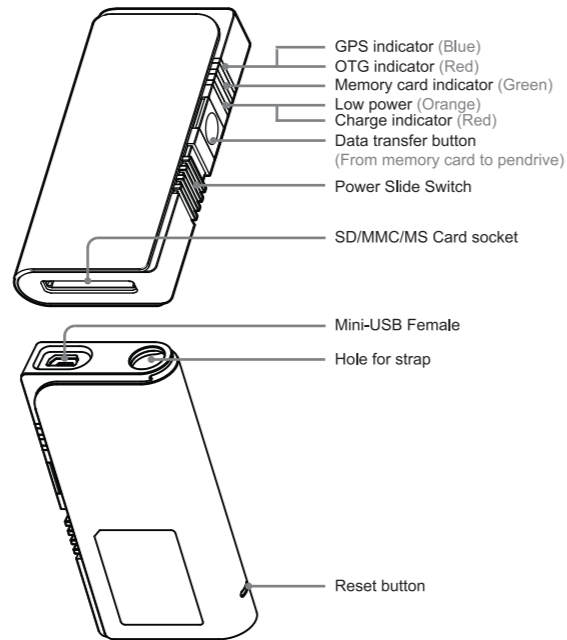


Galbum

GPS Travel Logger Album



PRODUCT OVERVIEW



05 Application



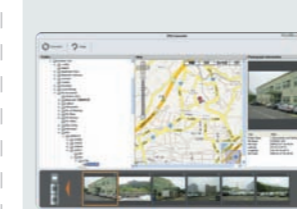
Environment Setting (only First Time) :
Search the PDL Disk and press right button of mouse to "Setup PDL Converter".

06



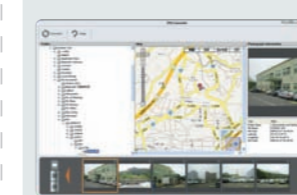
After setup Galbum converter , press right button of mouse to " Run Galbum Converter ". And Galbum Converter will pop on.

01



Folder :
After Convert Finish , Choose the folder of "My Document\Galbum".The Convert Data arrange in order of the Date that take photos.Choose the folder of date and photos. Photos will show on the screen.

02



After convert , GPS data add to the photos.Photos which have GPS data have a little circle upper the right corner , GPS coordinates and the Position of Google Map, or it won't appears.

05



Both show of the Position and Photos :
After convert , choose the "IMG" folder of the date that logger .

06



Press the circle of the Photo Bar. The position where take photos will show on the Google Map.

PRODUCT DESCRIPTIONS

Galbum is an advanced device integrated GPS and card reader function offering the easy combination between GPS data logger and pictures.

Via Galbum, you could attach GPS information to the pictures taken easily and upload the geotagging pictures to web or store in your PC.

FEATURES

- ▶ GPS Travel Logger - Take Down Points of Travel
- ▶ Card Reader - Suit for SD/MMC , MS Memory Card
- ▶ Data Bridge - Copy Files From SD/MS Card to External Pendrive
- ▶ Easy Combine - User interface to combine GPS and Photos
- ▶ Dedicated for Google Map
- ▶ Compatible with Digital Cameras.

SAFETY PROCAUTIONS

Please follow the safety precautions carefully before you use the product. Make sure that you use the product correctly according to the procedures described in the guide.

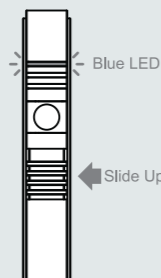
1. Never place the product close to equipment generating strong electromagnetic fields.
- * Exposure to strong magnetic fields may cause malfunctions.
2. Never plug or unplug the product if your hands are wet, otherwise it will may cause electrical shock.
3. Do not drop the product to the ground to avoid malfunction.
4. Do not attempt to disassemble or alter any part of the product that is not described in this guide.
5. Do not put heavy material on the product.
6. Do not use the product in a wet location.
- * In the event that water or other liquids enter the interior, immediately unplug the product from the computer.
- * When continuing usage of the product under above situation may cause fire or electric shock.
7. Do not place the product near a heat source or expose them to direct flame or heat.
8. Do not place the product in damp or dusty places.

SPECIFICATIONS

GPS function	
Chipset Channels	12 Tracking Channels
Sensitivity (Tracking)	-161dBm (indoor)
Cold start	45 sec
Warm start	35 sec
Hot start	1 sec
Reacquisition Maximum altitude	0.1sec typical 18000 m
Maximum velocity	515 m/s
System characteristic	
Compatible Card Format	Compatible with Compact Flash Specification Revision 4.0 Compatible with SD 2.0 SDHC Compatible with MMC 4.2 Compatible with Memory Stick PRO/Duo
OTG Interface	Mini USB (Type AB)
Embedded Memory	1G Bits NAND Flash
Battery	800mAh Lithium Battery
USB cable	Mini USB to Type AB female connector cable
Operation Time	About 10 hours (Tracking)
Dimension	40.5W x 85H x 15D mm
Weight	52g with battery
Environment	
Operating temperature	0 °C ~ 55 °C

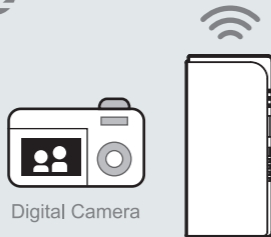
GETTING STARTED

01



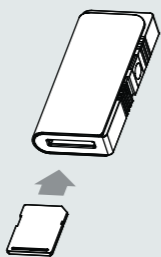
Power on the Galbum to search for satellite signals . When the Blue LED is blinking , it starts to record GPS Data. The initial function will take about 45 seconds.

02



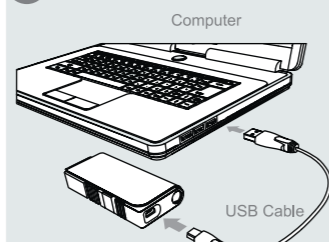
Start taking pictures with your digital camera and make sure the Galbum's blue LED is still blinking.

03



After finish taking pictures , take out Memory Card (SD/MMC, MS) form Digital Camera and insert to the Galbum Card Slot.

04



Both with Galbum and Memory Card connect to the USB of PC. After Linking of Galbum and PC, the friendly user interface will pop on (depend on autorun function of PC).

07



Press the convert button on the upper left corner.It will pop on another application (converter) to setup time zone.

08



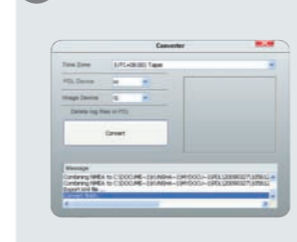
- Step1: Choose Time Zone. (The Place Time Zone Of Live Country).
- Step2: Choose Galbum Device. (Embedded GPS Log Data Disk).
- Step3: Choose Image Device. (Memory Card Disk).
- Step4: Press Convert button

09



After Press the "Convert" Button , Galbum will automatically geotagging the GPS Data to Photos. And Copy Files to the Folder of "My Document\PDL".

10



Message :
All the action item will show on the Message Window.And make sure the message of "convert finish" .

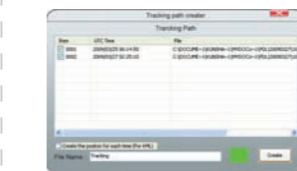
Trace Data Logger on Google Map

01



Choose the "GPS" folder of the date that logger . Press the right button of mouse. Press open folder.

02



- Step1: Choose the Tracking Path Item that want to show (Google Map).
- Step2: Choose "Create the position for each time (for KML)"to show the Path on Google Earth Should be install Google Earth at first.
- Step3: Choose your favorite color of the path.
- Step4: press the " Create " button.

03



After create . A circle icon will appear on the Photo Bar. Click the left button on the mouse show the Path on Google Map.

04



Double click the left button on the mouse will open another application, Google Earth, to show the path. And the tacks show the GPS information (ex: UTC time, Speed...etc.).

PACKAGE CONTENTS

1. Galbum x 1
2. USB cable (with two cores) x 1
3. User Guide x 1

WARRANTY

If the product is in malfunction or damaged due to quality problem, please send it for repair. Free maintenance service is offered with 1 months from the date of purchasing. However, this warranty does not cover malfunction or damage resulted from human factor, such as dismantle unauthorized or improper use; in such cases, material cost and service fee will be charged. Warranty is to be proved with the Warranty Card included in the Packing Case. When purchasing the product, please check and ensure a Warranty Card is in the case and ask the dealer to fix shop stamp and insert date and model number on it to validate. When the product purchased is exceeded Free Warranty Period, we will charge fee for the maintenance and service.



No.398, Youyi Rd., Jhunan Township, Miaoli County 350, Taiwan R.O.C.
Tel: 886-37-586068
Fax: 886-37-586058
Web: www.aptosdesign.com
E-mail: service@aptosdesign.com

Model : _____
Serial Number : _____
Date of Purchase : _____

Stamp by shop
Not valid without stamp