

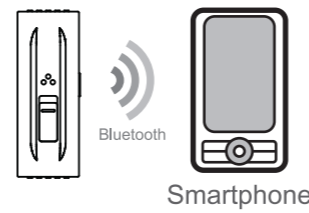
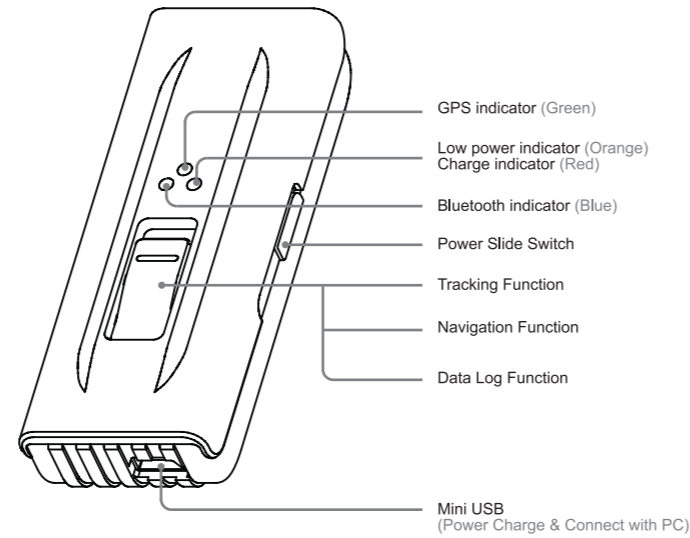
# Gtrackr

GPS & Wireless Locating System



ADSG001-0

## PRODUCT OVERVIEW

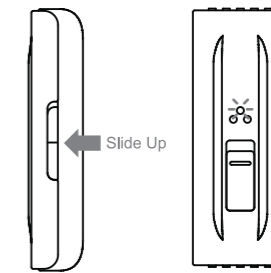


3. Connect Gtrackr with Smart Phone  
- After Bluetooth Link, Smart Phone sends message every time interval to Web Server and mobile phones of Parents or Friends.



4. Parents can login our web service to check their Kids' route and location.

## Travel Logger



- Slide up the switch to power on the device
- Check GPS status  
GPS indicator is blinking  
(When Gtrackr 3D fix)
- Gtrackr start recording the travel logger itself



4. Use the KML file to show the travel path on Google Earth or Google Map

## PRODUCT DESCRIPTIONS

Gtrackr is a data logger device that can store more than 120 hours travelling routes. Through USB port, user can use our application to merge the inside data with his photos for map application. It also can be treated as a small Bluetooth-GPS receiver and combine with handheld devices for easily navigating. Furthermore, Gtrackr utilizes Bluetooth technology to connect with mobile phones for sending SMS messages, GPS longitude And Latitude, to a specific GIS server. Therefore, their relatives and friends can easily know the user's location through web application

## FEATURES

- ▶ Multi-Function with all in one.
- ▶ Bluetooth GPS Receiver – working with navigation software
- ▶ Security Tracker – real time tracking on Web-based GIS server
- ▶ Travel Logger – built-in 64Mb Flash, supporting up to 450000 way points

## SAFETY PRECAUTIONS

Please follow the safety precautions carefully before you use the product. Make sure that you use the product correctly according to the procedures described in the guide.

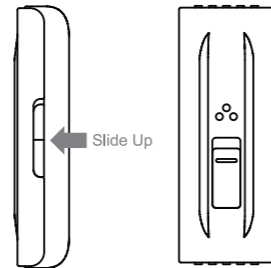
- Never place the product close to equipment generating strong electromagnetic fields.
- Exposure to strong magnetic fields may cause malfunctions.
- Never plug or unplug the product if your hands are wet, otherwise it will may cause electrical shock.
- Do not drop the product to the ground to avoid malfunction.
- Do not attempt to disassemble or alter any part of the product that is not described in this guide.
- Do not put heavy material on the product.
- Do not use the product in a wet location.
- In the event that water or other liquids enter the interior, immediately unplug the product from the computer.
- When continuing usage of the product under above situation may cause fire or electric shock.
- Do not place the product near a heat source or expose them to direct flame or heat.
- Do not place the product in damp or dusty places.

## SPECIFICATIONS

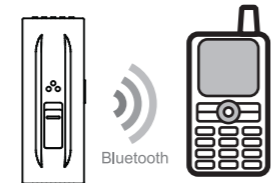
Frequency	L1, 1575.42MHz
Accuracy	Position 2.5m CEP, Velocity 0.1m/sec, Timing 300ns
Acquisition	Cold start 35 seconds average
Open Sky	Warm start 30 seconds average
	Hot start 1 second average
Sensitivity	-161dBm
LED	Green – GPS status, Blue – BT status, Red – Charging indicator, Orange – Low power (two-step detector)
Operating Temperature	-10°C ~ +70°C
Storage Temperature	-20°C ~ +80°C
Channels	51 Channel for Acquisitions, 14 Channel for Tracking
Power	Built-in 560mAh Li-Poly Rechargeable battery 8 ~ 10 hours
Bluetooth	Bluetooth V2.0 Class II device
GPS	NMEA-0183 V3.01, GGA,GSA,GSV,RMC,VTG
Dimension	74mm × 26mm × 16mm
Weight	29.7 g with battery
Package List	Gtrackr × 1 Mini USB cable × 1 Quick user guide CD-ROM

## GETTING STARTED

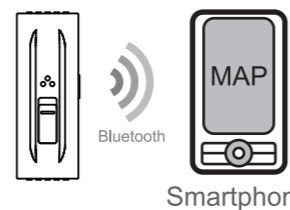
### Bluetooth GPS Receiver



- Slide up the switch to power on the device
- Check GPS status  
GPS indicator is blinking  
(When Gtrackr 3D fix)
- Check Bluetooth status  
Bluetooth indicator is blinking  
(When Gtrackr link with mobile phone)

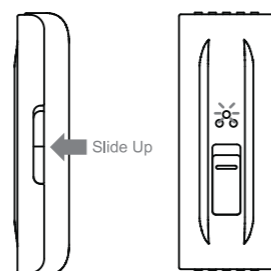


- When Bluetooth of Smart Phone is on, use Smart Phone to search Gtrackr
  - When you press accept the device, you need to input the pin number.
- Pin code : 8888



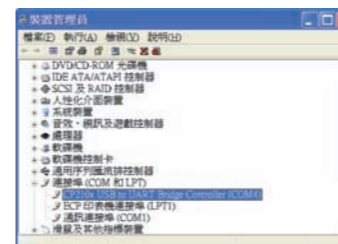
- Check GPS and Bluetooth status:  
The GPS & Bluetooth indicator would blink
- Gtrackr sends GPS Message for Smart Phone (with Map) to Navigation.

### Security Tracker

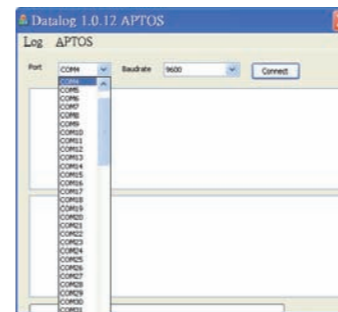


- Slide up the switch to power on the device
- Check GPS status  
GPS indicator is blinking  
(When Gtrackr 3D fix)

## USB COM port setup

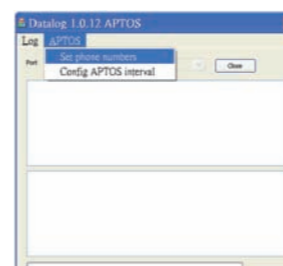


Install USB driver (CP210x\_VCP\_Win2K\_XP\_S2K3.exe) and open "datalog.exe" file

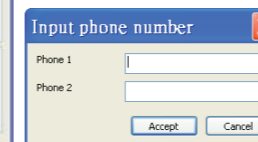


Select and click "COM4" of Port and "9600" of Baudrate And then click "Connect" to start to setup the Gtrackr information

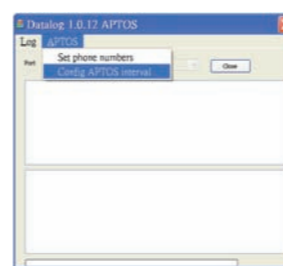
## Phone Number Setup



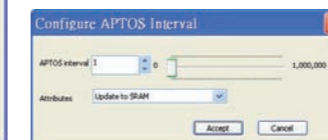
Choose and press the "Set phone numbers" button to setup two cell phone number and then press the "Accept" button.



## Time Interval Setup



Choose and press the "Config APTOS interval" button to setup time interval and then press the "Accept" button.



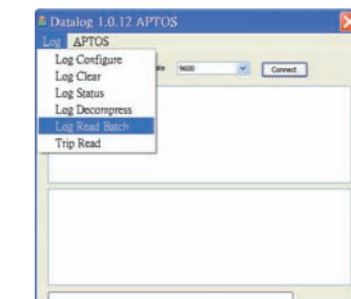
## Device Setup



Choose and press the "Log Configure" button to setup log interval min time is for time setup min distance is for distance setup min speed is for maximum speed limit setup and then select the Data log "Enable" and press the "Setting" button.



## Download files



Click "Log Read Batch" of Log to download the Gtrackr's Logger data into PC. And Click "Log Decompress" of Log to convert to KML file.

## WARRANTY

If the product is in malfunction or damaged due to quality problem, please send it for repair. Free maintenance service is offered with 1 months from the date of purchasing. However, this warranty does not cover malfunction or damage resulted from human factor, such as dismantle unauthorized or improper use; in such cases, material cost and service fee will be charged. Warranty is to be proved with the Warranty Card included in the Packing Case. When purchasing the product, please check and ensure a Warranty Card is in the case and ask the dealer to fix shop stamp and insert date and model number on it to validate. When the product purchased is exceeded Free Warranty Period, we will charge fee for the maintenance and service.



No.398, Youyi Rd., Jhunan Township, Miaoli County 350, Taiwan R.O.C.  
Tel: 886-37-586068  
Fax: 886-37-586058  
Web: www.aptosdesign.com  
E-mail: service@aptosdesign.com

Model :  
Serial Number :  
Date of Purchase :

